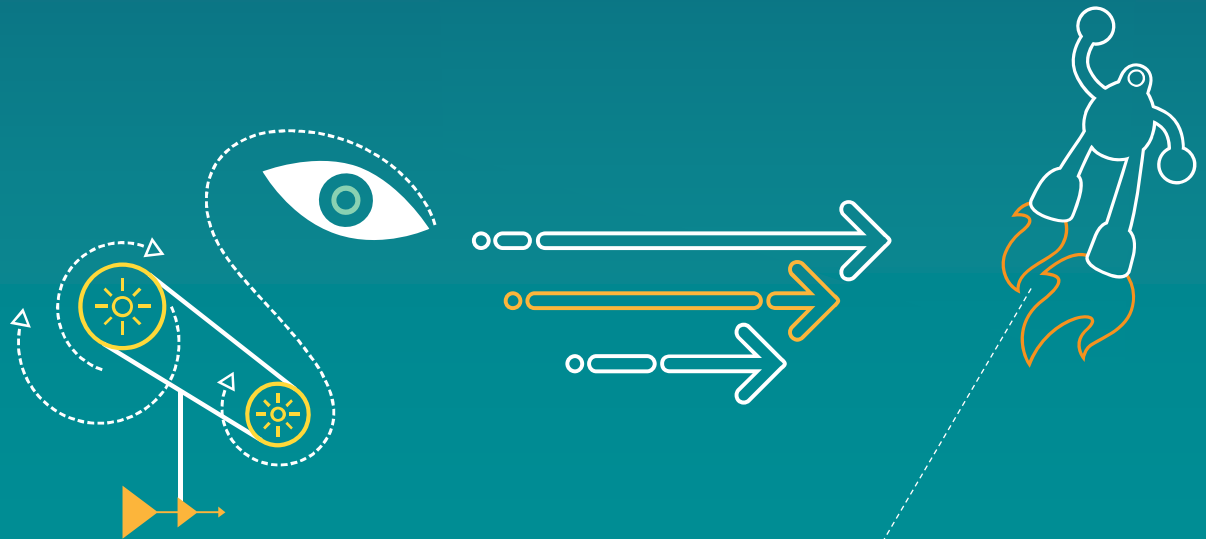


January 2017

Qualcomm Individuals with Diverse Abilities Community of Practice Meeting



CDO – Introduction

Vicki Mealer-Burke – Qualcomm’s first Chief Diversity Officer!



- Background/History
- Vision for Global Inclusion and Diversity
- Unity/Collaboration with Employee Networks
- AbilityQ/ Going for the Gold Campaign



Follow me
@vmealer

AbilityQ Overview

Mission and Participation

- Mission:
To address and support the unique needs of people with disabilities: employees with disabilities, employees who are caregivers of those with special needs, and global users of Qualcomm technologies
- Subcommittees
 - AbilityQ
 - AbilityQ.Parents
 - AbilityQ.Parents.Boulder

The Year Ahead - 2017

Building upon what works

Internal

- Collaboration!
 - QVETS & AbilityQ – Dr. Richard Pimental, Veterans Day event
 - ERG network as literal “Big Tent” with shared interests – All For One
- Regular speaker/resource lunches
- Our message in common areas: Lobbies, Newsletters, Mailing lists
- Create shared experiences
 - Accessibility Lab
 - Hack-a-Thon

External

- Qualcomm Social Responsibility Report
- All-Employee events – social and/or work focused
- Rising Leaders Mentorship Program
 - One applicant this year
 - Goal – increase number of applications in the next cohort
 - USBLN and NFAR as partners

- 2/8/2017 Expand into other US offices

Thank you

All data and information contained in or disclosed by this document is confidential and proprietary information of Qualcomm Technologies, Inc. and all rights therein are expressly reserved. By accepting this material the recipient agrees that this material and the information contained therein is to be held in confidence and in trust and will not be used, copied, reproduced in whole or in part, nor its contents revealed in any manner to others without the express written permission of Qualcomm Technologies, Inc.

© 2013 QUALCOMM Incorporated and/or its subsidiaries. All Rights Reserved.
Qualcomm is a trademark of Qualcomm Incorporated, registered in the United States and other countries.
Other products and brand names may be trademarks or registered trademarks of their respective owners

References in this presentation to “Qualcomm” may mean Qualcomm Incorporated, Qualcomm Technologies, Inc., and/or other subsidiaries or business units within the Qualcomm corporate structure, as applicable.

Qualcomm Incorporated includes Qualcomm’s licensing business, QTL, and the vast majority of its patent portfolio. Qualcomm Technologies, Inc., a wholly-owned subsidiary of Qualcomm Incorporated, operates, along with its subsidiaries, substantially all of Qualcomm’s engineering, research and development functions, and substantially all of its product and services businesses, including its semiconductor business.

